

Ultra Pearl 295

This paper has a highly pronounced pearl surface similar to traditional lab Crystal Archive paper. It has a super bright white base and a highly scuff resistant finish that can prevent adequate scanning, protecting copyright.

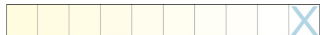
PERFECT FOR...

- Prints that will be handled a lot, indoor signage
- School and studio photography - thanks to the anti-scan layer your work will be protected
- Images with deep blacks

LET'S GET TECHNICAL...

- **Weight** – 295gsm
- **Thickness** – 0.28mm
- **Whiteness CIE** – 103
- **Base Construction** – Resin Coated
- **Coatings** – A single-sided, highly pronounced pearl, instant dry microporous receiving layer
- **Primary Features** – Instant touch dry, unique pearl finish, water resistant, superb colour and monochrome reproduction, exceptional ink absorption and Dmax
- **Black Ink** – PK
- **Optical Brightening Agents (OBA)** – Yes

BASE WHITENESS INDICATOR



SURFACE



Click to enlarge

What images suit this paper?

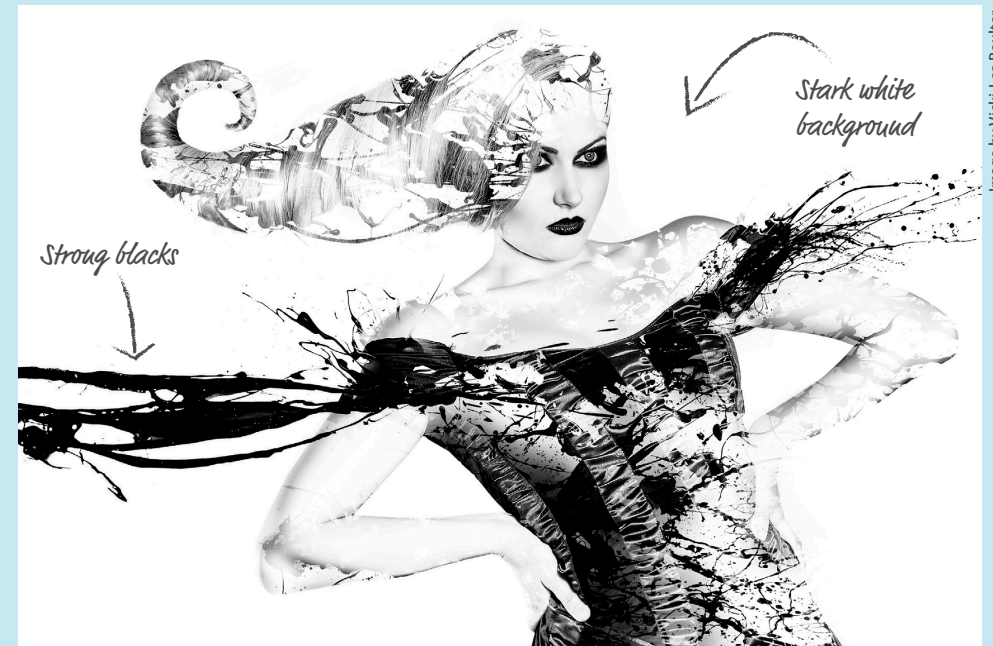


Image by Vicki-Lea Boulter



Image by Dino De Luca

“ Having tried printing a variety of high-key and low-key images, I was genuinely impressed with how well this paper copes. It is capable of rendering delicate highlight detail while the tonal separation in the shadows is good.

Tony Worobiec, B+W Photography magazine